

DAVID ARMITAGE

COASTAL SERIES: RECENT WORKS



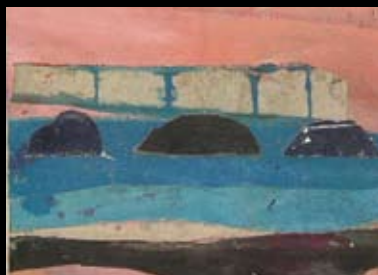
Downland/Coast 1 – 19 x 25cm



Downland/Coast 2 – 20 x 29cm



Downland/Coast 3 – 19 x 25cm



Downland/Coast 4 – 19 x 27cm



Downland/Coast 5 – 19 x 25cm



Downland/Coast 6 – 20 x 26cm

David Armitage is a successful abstract artist of great originality.

He is a Tasmanian who trained in Melbourne and spent much of his life in New Zealand. He painted and ran the City Art Gallery programme in Auckland before coming to East Sussex to live in 1973.

He has, above all, a splendid sense of colour and form and his work clearly shows a nostalgia for the strong light and surroundings of his early life near the southern Pacific Ocean. One senses he is a beachcomber who loves wandering along the edge of the sea picking up dried pieces of wood or examining sea life in the sand pools or underwater. These are his main imagery sources which he manipulates into magical but strange shapes on both his large and quite small canvases.

The progress of his work reads like a spiritual travelogue.

Eric Buesnel



Pacific 1 – 20 x 20cm



Pacific 2 – 20 x 24cm



Pacific 3 – 20 x 20cm



Orkneys 1 – 30 x 24cm



Orkneys 2 – 30 x 24cm



Orkneys 3 – 32 x 24cm



Nile – 50 x 40cm



Northern Light – 50 x 50cm



A brochure of recent works is available from the address below. Alternatively, you can download a PDF from the David Armitage website.

All sizes are approximate and are in cm.

David Armitage, Long Cottage, Graywood, East Hoathly, East Sussex BN8 6QP, United Kingdom

Telephone: +44 (0)1825 873477

Email: info@davidarmitage.com Website: www.davidarmitage.com